



1 8 2 3



Pendant Lamp 6878-4 "Brilliant"

The Seventies Family

This little pendant lamp stems from a very active period of the early seventies when the fifth generation started to make way into a new era.

This minimalistic design takes its brilliance from the skilful application of Swarovski beads, one of the first lighting fixtures to feature these crystals. This is augmented by the reflectors set on the bulbs. The frame is made from brass. Beside the standard polished surface other finishes can be applied to create different expressions.

With the tiny size this fixture is perfect to give a sparkle to hallways or small rooms.

Design: Lobmeyr, circa 1970; Modern

Material: Swarovski crystal; Finish: Polished

Special requests: Other finishes

Dia.: 49 cm, H.: 44 cm; Weight: 10 kg

Lights: 4 candles; Max. Wattage: 240 W

LOBMEYR



1 8 2 3



Pendant Lamp 6878-4 "Brilliant"

The Seventies Family

This little pendant lamp stems from a very active period of the early seventies when the fifth generation started to make way into a new era.

This minimalistic design takes its brilliance from the skilful application of Swarovski beads, one of the first lighting fixtures to feature these crystals. This is augmented by the reflectors set on the bulbs. The frame is made from brass. Beside the standard polished surface other finishes can be applied to create different expressions.

With the tiny size this fixture is perfect to give a sparkle to hallways or small rooms.

Design: Lobmeyr, circa 1970; Modern

Material: Swarovski crystal; Finish: Polished

Special requests: Other finishes

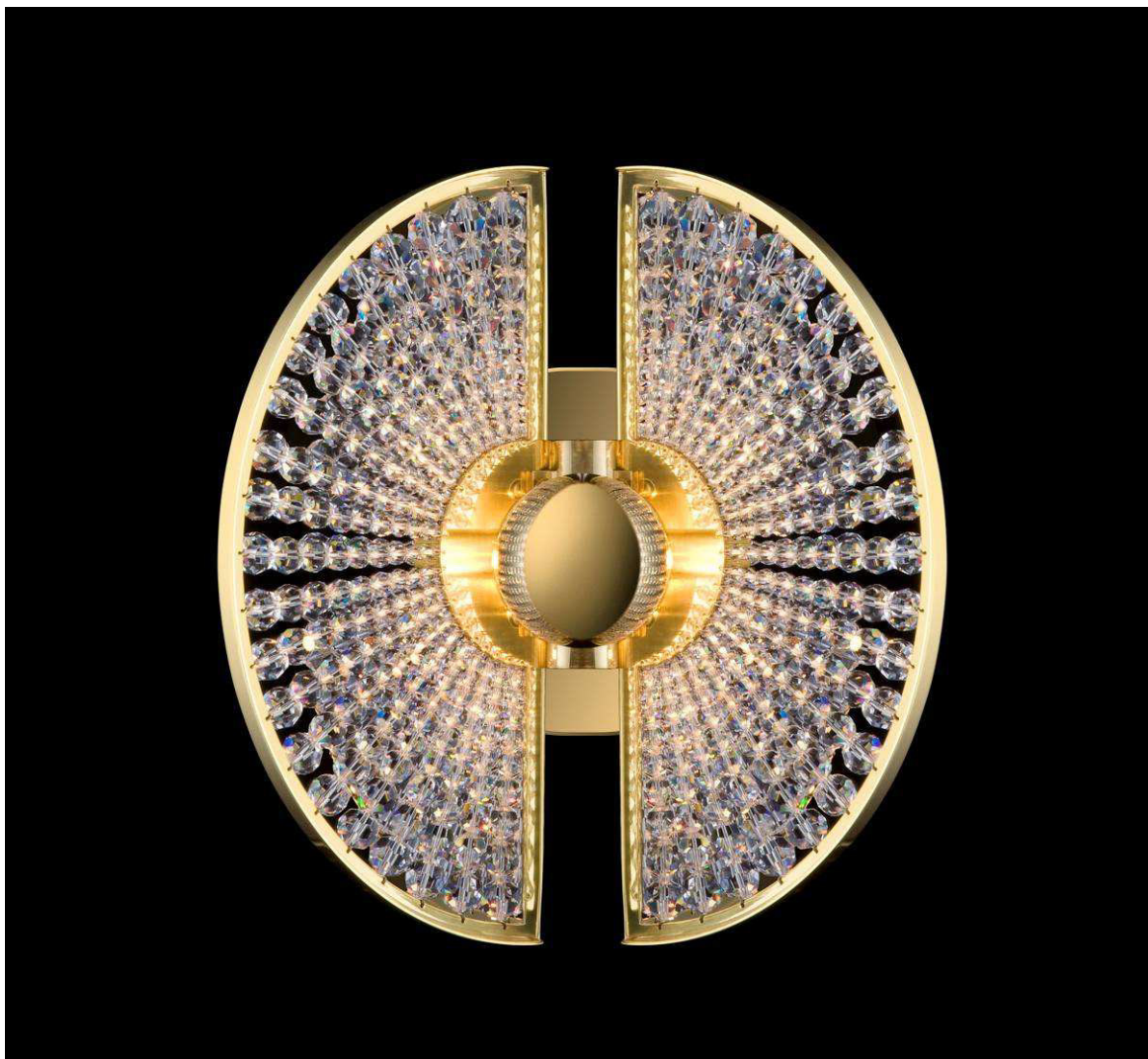
Dia.: 30 cm, H.: 25 cm; Weight: 5 kg

Lights: 4 lights; Max. Wattage: 240 W

LOBMEYR



1 8 2 3



Wall Sconce 6878-W-1 "Brilliant"

The Seventies Family

This little wall light stems from a very active period of the early seventies when the fifth generation started to make way into a new era.

This minimalistic design takes its brilliance from the skilful application of Swarovski beads, one of the first lighting fixtures to feature these crystals. This is augmented by the reflectors set on the bulbs. The frame is made from brass. Beside the standard polished surface other finishes can be applied to create different expressions.

This wall sconce is a perfect complement to the Brilliant pendant lamp.

Design: Lobmeyr, circa 1970; Modern

Material: Swarovski crystal; Finish: Polished

Special requests: Other finishes

H.: 50 cm, W.: 30 cm; Weight: 6 kg

Lights: 1 candle; Max. Wattage: 60 W

LOBMEYR